

# GPR survey of Cheko Lake (Siberia)

*Kosmicheskoye Veshchestvo na Zemle.* Nauka, Novosibirsk, pp. 24-54

Pipan, M., Geletti, R., Finetti, I. and Galuppo, P., 1998. Hough Transform based multiple removal in the XT domain. *SEG annual meeting Extended abstracts Book*, SP 6.5

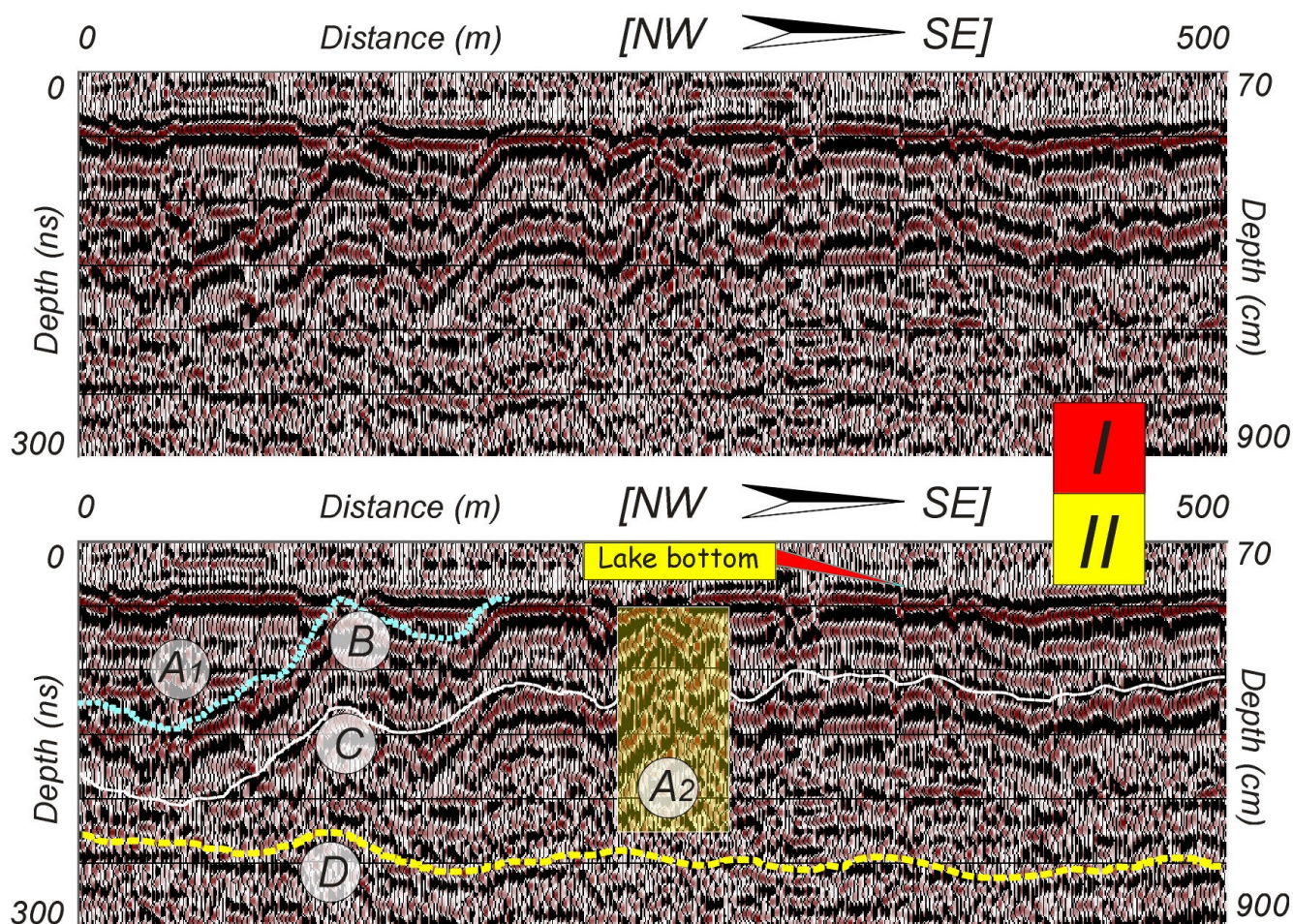


Figure 2: Example of 50 MHz GPR profile from the south-west sector of the Cheko Lake. (I) Processed section (II) Interpreted section: (A) marks locations characterized by chaotic patterns of limited (A1) and large (A2) extension (B) is one of the dipping layers which locally form oblique tangential clinoforms and exhibit a toplap termination (C) is a reflector parallel to the dipping layer (and to the lake bottom to the SE of the toplap termination). See text for details.